



HS515C-U

PARALOW
Circle Dot Sight

User's Manual



Holosun Technologies Inc.
Customer Service

Phone: 909-594-2888
Email: warranty@holosun.com
v1.2



Multi Reticle

COLOR	<input type="radio"/>	Dessert Sand
	<input checked="" type="radio"/>	Matte Black



www.holosun.com

PARALOW HS515C-U: New small compact is a circle dot sight with the option of dot only or dot with circle reticle pattern. Employing new LED technology, the life time for one CR2032 battery can be up to 10,000 hours. Attached non obstructing flip-up lens covers and kill flash. The sight may be installed on various firearms such as shotguns, pistols, rifles, air rifles and crossbows .

excluding any delivery costs, which will be born by purchaser. We will not be liable for incidental, consequential, or special damages arising out of or in any connection with the use or performance of this product. This warranty is void if the product has been misused, modified, neglected, or disassembled prior to its return. Please refer to <http://www.holosun.com> for current and complete warranty information.

touching the glass surface with dry cloth or tissue paper . No organic solvents such as alcohol, acetone are allowed. Don't try to dismantle the device as the internal parts are specially cleaned and sealed and with anti - fog treatment, Any such attempt will void the warranty.

If repair needed, you can call our customer service center, or login in our website ,or send email to us.

Limited warranty

SUMMARY

We provide limited lifetime warranty from the date of purchase on parts and workmanship to the original purchaser. At our sole discretion, we will repair or replace product found to be defective under normal use and service without charge

Thank you for purchasing the PARALOW HS515C-U Circle Dot Sight. Please read the User's Manual carefully.

Model

HS515C-U



Kill flash

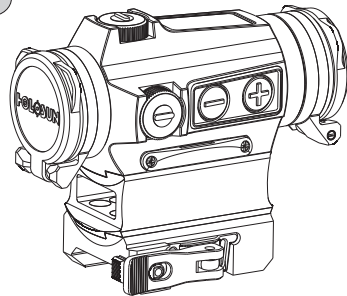


Fig1

Features

- 1. Weather:** Suitable for all weather conditions, including low light such as at dawn/nightfall.
- 2. Full field of view for target acquisition:** The user can gain rapid target acquisition and situational awareness while aiming with both eyes open.
- 3. Solar power supply:** The device operates by solar power (silicon solar cell). Power is ready for use at all times. Under daylight conditions, LED can be powered by solar cell.
- 4. Dual power supply design:** Sight will switch to battery supply if there is not enough light for solar operation.
- 5. New LED technology:** Due to adopting new LED technology, the sight can be operated for up to 10,000 hours with only one battery.
- 6. Parallax free optical system:** Parallax is $\leq \pm 1\text{MOA}$.

the required adjusting range is beyond the limits, consider adding an extra spacer between the device and mounting rail to allow for additional adjustment.

Maintenance and care

This device is a precision instrument that deserves reasonably cautious care. The following tips are provided to ensure long lasting use of the sight.

The optical system including the objective window and eyepiece lens which are multi-coated optical glass. When cleaning the lenses, blow away the dust on surface, wet the lens with lens cleaner or clean water, wiping the fingerprint and oil stain with lens tissue, soft cotton or microfiber cloth. No special maintenance needed for housing surface. Avoid

2. The built in screw driver tool on the protective cap can be used for zeroing adjustment (see Fig5). See label inside cap.
3. First open the protective cap, position slot type screwdriver on the slotted screw, then rotate the screw to right or left for adjustment. Each left or right click is for one adjustment equivalent to 0.5MOA value.
4. Adjust the Elevation turret counterclockwise to move the point of impact UP. Adjust the Windage turret counterclockwise to move the point of impact to the RIGHT. Turning either turret clockwise moves the point of impact in the opposite direction.
5. **Caution:**
Don't try to over rotate the knobs. If you feel the knobs cannot be rotated, this indicates you have reached the adjustment limit, otherwise the device may be damaged. If

7. **Brightness adjustment:** There are 12 settings for the brightness of the reticle so as to match the ambient lighting conditions.
8. **Switch** between circle dot and red dot reticles.
9. **Eye safe:** LED reticle pattern will not damage your eyes.
10. Windage and elevation turrets embedded for protection.
11. **Two top mounted buttons:** The side mounted buttons allow for easy operation without obstructing the user's vision. Minimize vision obstruction with push button controls and streamlined housing design.
12. Kill flash included.
13. Flip-up lens covers won't obstruct your vision.
14. H/L riser mounts included.
15. **Quick release mount:** Adaptable to Picatinny rail.
16. **Waterproof:** IP67

Multi Reticle



The reticle for this sight is a central 2MOA dot, centered in a 65MOA circle with four positioning points. The diameter of the circle reticle represents approximately 5'5" at 100 yards (170cm at 100m).

The circle reticle can be enabled or disabled as required by pressing the "-" button for 3 seconds.

Important notices

1. Ensure that the firearm is completely unloaded and safe before device installation, sighting in, or installing a new battery.
2. Please keep the packaging should you need to make a warranty claim.

Zero setting

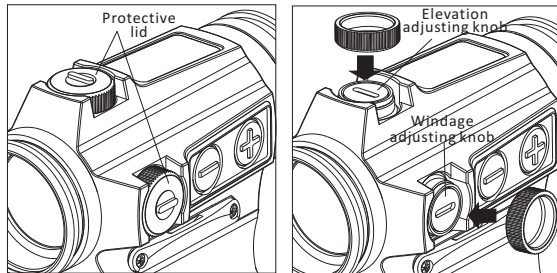


Fig 5

1. On top of sight is the elevation adjusting turret, windage adjusting turret is on the right side (see Fig5). The sight has been factory adjusted for approximate zero.

2) The sight will instantaneously wake up and turn on with any motion detection to last saved setting.

5.Special operation:

1) Solar cell power drive: If the battery voltage is below 2.2Vdc, please take it out. The sight can still work under a certain lighting environment.

2) Turn on/off the circle reticle

When the battery voltage is low or only solar cell power drive, the circle reticle can be enabled or disabled as required by pressing the "-" button for 3 seconds.

6.Note:

1) Memory function: The sight will remember the last saved brightness setting when powered on and off.

2) Low battery Warning: If the battery voltage is below 2.2Vdc, the reticle will blink slowly.

Battery

1. Operates with two-way power supply (solar cell and internal battery). The operating voltage for this device is DC3V using one high quality CR2032 Lithium battery included with purchase.

2. The high quality battery can power the device for up to 10,000 hours.

Caution: The battery is not rechargeable.

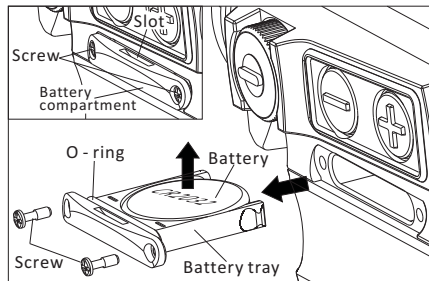


Fig 2-1

3. Battery replacement:

1) Removing the battery (Fig 2-1):

- Loosen screw 1,2.
- Insert coin or similar object in the battery tray slot, pry out the battery tray, and remove the discharged battery by lifting it up.

2) Battery installation(Fig2-2):

- Insert the battery into the battery tray by pushing it down with the correctly marked polarities, "+" and "-".
- Insert and press the tray into the battery compartment.

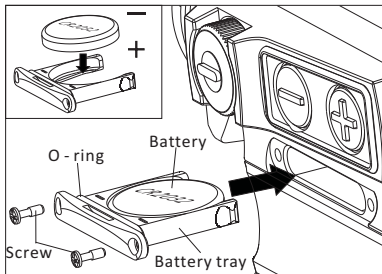


Fig 2-2

between high and low brightness levels.

2) **Manual mode:**

- Press down the "+" button for 3 seconds to enter into the Manual Mode.
- Brightness adjustment: There are 12 settings for reticle brightness level under manual mode. The default brightness is at 7 when the device is switched to this mode. The brightness can be adjusted as required by pressing the "+" or "-" to increase or decrease the brightness level, one press for one change in brightness level.

3) **Switching back to auto mode:** A single press of the "+" button for 3 seconds will switch the sight to auto mode.

4. **Sleep time mode:**

- Please note that your red dot will automatically enter into sleep mode after 10 minutes of no movement.

3. Operation mode: Two operation modes are available ; Auto mode and manual mode.

1) **Auto mode** (default) - with solar cell and internal battery two-way power supply:Based upon the ambient lighting level, the sight will switch between battery and solar cell power automatically for operation in all lighting conditions.

Auto mode operation:

a) Sight is always in auto mode unless specifically switched to manual mode.

b) While in auto mode, the brightness of the reticle is automatically adjusted to match ambient lighting. The brighter it is, the higher the dot intensity.

c) If lighting is low enough, the sight will automatically switch to the battery. While running on battery, you can adjust the reticle brightness using the "+" and "-" buttons to switch

c) Fasten screw 1,2.

Caution:

The loss or damage of seal ring will cause water to leak into the compartment and may damage electronic circuits and the device.

Installation

1. The mount bracket is adaptable to the arms with Picatinny Rail, If the arms have no Picatinny rail , or with other types of rail, please contact a qualified gunsmith.

2. Designed with our patented nonlinear cam clamping system, no tools are required for attaching to a rail. Push locking button, lift up handle to loosen the locking bar. To mount sight on rail, push the handle down, locking button will automatically engage. The installation is complete.(fig 3-1)

3. Initial installation

For the first installation, You may feel the clamp too tight that the hand shank cannot be pushed down or too loose that the device cannot be clamped tightly on rail , you need to make a little adjustment for the clamp. The following is the adjustment steps:

1) There is one Torx socket at the end of clamp adjusting bolt on the side of the mount. (See Fig 3-2) Before installation,

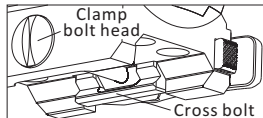


Fig 3-2

loosen the screw to release clamp using included Torx wrench, and then;

2) Pull up the cam clamp handle. Slide the sight into rail and close

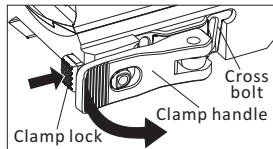


Fig 3-1

the clamp handle.

3) Tighten the clamp adjusting bolt using the Torx wrench. This will tighten the clamp to the rail to moderate degree. Try to pull up and close the clamp handle, adjusting the clamp screw appropriately, neither too tight nor too loose. This will avoid the mount becoming loose under recoil.

Sight operation

1. **Switch on:** Press and release either brightness button ("+" or "-") to turn on the sight.

2. **Power off:** Press the "+" and "-" buttons simultaneously will turn the power and motion sensor off.

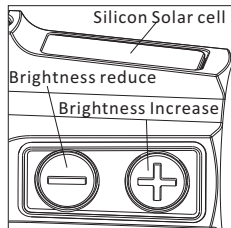


Fig 4